

THE INSPIRE PATIO DOOR

INTEGRAL
NAILING FIN

VERTICAL
REINFORCED
RAILS

INTERCEPT
SPACER

INTELLIGLASS
X LOW-E

STANDARD FEATURES

- **Multi-Chambered 4-7/8" fusion welded PVC frame** provides lasting strength and low-maintenance beauty.
- **Integral nail fin** is 1-1/4" long with 1-3/8" setback. Can be removed at factory or in the field.
- **Fusion welded operating panel** features corners that will never separate, or crack.
- **Direct set fixed panel** improves door structure and eases installation.
- **Full interlock** ensures secure closing of the door and keeps out drafty elements.
- **Field reversible two panel doors** allow for flexibility in determining operating direction. Can be factory specified.
- **3/4" insulated tempered glass with Intercept spacer** is the foundation of thermal performance and comfort.
- **Tandem self-leveling steel rollers** are end adjustable to allow fine tuning of door operation.
- **Impact resistant threshold** withstands heavy traffic.
- **Rolling screen door** includes BetterVue improved visibility screen mesh.
- Non-Prorated **Limited Lifetime Warranty** covers vinyl, glass, screens and hardware for as long as you live in your home.



● Standard
● Option

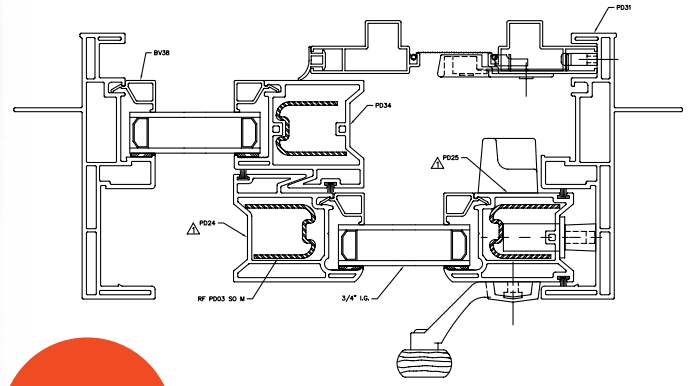
NOMINAL SIZE	PANELS	DOOR SIZE
5068	2	59-1/2" x 79-1/2"
6068	2	71-1/2" x 79-1/2"
8068	2	95-1/2" x 79-1/2"
9068	3	106-1/8" x 79-1/2"

vinylmax
windows

Passion for Homes and Families



CROSS SECTION



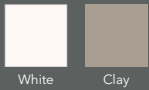
13 EXTERIOR COLORS

ENDLESS STYLE OPTIONS

CHOOSE YOUR PERFECT LOOK

COLORS

SOLID VINYL COLORS



White Clay

LAMINATED EXTERIOR



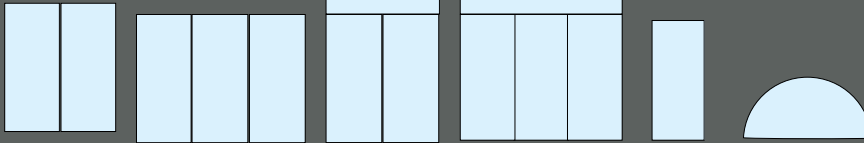
Black on White Vinyl

PAINTED EXTERIOR FINISHES



White Black Graphite Sterling Forest Green Bronze Royal Brown Terra Pebble Tan Cream

STYLES



2 Panel Door 3 Panel Door 2 Panel Transom 3 Panel Transom Fixed Panel Geometrics

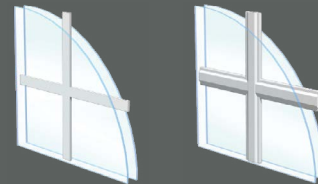
GRIDS

PATTERN



Colonial Perimeter Prairie

PROFILE (COLOR MATCHED)



Flat Georgian

PERFORMANCE DATA

THERMAL

T6500 Single Hung	No Grids			With Grids		
	U-Value	SHGC	VLT	U-Value	SHGC	VLT
Clear Glass	.47	.66	.69	.47	.58	.60
IntelliGlass X Low E / Argon	.28	.23	.54	.28	.21	.48

A9904.02-116-45

The lower the **U-value**, the greater a window's resistance to heat flow and the better its insulating value. The lower the **SHGC**, the more a product is blocking solar heat from coming through the window.

VLT - Visible Light Transmittance - lower values mean less light passing through the window.

*windows outside these size limits have not been structurally tested

STRUCTURAL

Product Rating	Up to this size window*	Design Pressure PSF	Water Penetration	Equivalent Wind
R-PG35	72" x 80"	+/- 52.5 PSF	5.25 PSF	143 mph

83327.01-501-47

vinylmax
windows



2921 McBride Court
Hamilton, OH 45011
(800) 847-3736
vinylmax.com

WINDOW + DOOR
TOP 100
MANUFACTURERS

