



RADIANCE PLUS
— WINDOWS —

WHY VINYLMAX?



Quality First. In our facility, we utilize the most modern manufacturing methods and technology to produce the highest quality vinyl replacement windows. This results in the best value for your home.



Family Values. As a family owned and operated business, we value and respect our employees and their families as well as the millions of families who have our windows in their homes.



Warranty. To protect your investment and our reputation, we back our products with a Lifetime Limited Warranty so strong that it will exceed your expectations.



Made in the USA. Vinylmax is passionate about American manufacturing, American jobs and the American economy. That is why we source the majority of our components from other American manufacturers and fabricate our windows in our Ohio and New York factories. When you buy a window made in the USA, you can be sure you are not only getting American quality, but also supporting and sustaining local communities.



ENERGY STAR® Partner. The needs of every home are different and with our specialized glass packages you can find the perfect fit. We offer both dual and triple pane glass options and can meet the EPA's ENERGY STAR® criteria depending on your geographic location. By selecting our IntelliGlass Plus triple pane option, your window may qualify for ENERGY STAR Most Efficient 2024®.



vinylmax
windows



DOUBLE HUNG



Both the top and bottom sash operate allowing for ventilation and tilt-in for easy cleaning.

STANDARD FEATURES

1. **Cove molded sash detail** replicates the look of classic wood windows.
2. **Bio-Maxx composite locks and keepers** are 50% stronger than standard die-cast hardware while remaining lead-free and color-true, without fading, warping or chipping.
3. **Dual Function partitioned sloped sill** forms a negative pressure pocket that keeps sashes securely in place and water flowing away from your home, even during the most adverse weather conditions.
4. **Shadow grooved sash welds** replicate the classic look of mitered wood corners.
5. **IdeaSeal™ triple protection weather seal** keeps the indoor and outdoor environments separate with an integral interlock, sill compression bulb seal, and multiple rows of weatherstripping.
6. **Full balance covers** hide internal systems while eliminating unsightly visible sash stops.
7. **Integral lift and pull rails** are ergonomically engineered for smooth operation while remaining aesthetically appealing.
8. **Night latches** restrict sash movement for your family's safety and security.
9. **Effortless pivot balance system** utilizes stainless steel coils making sash operation smooth, effortless and whisper-quiet.
10. **Multi-chambered vinyl construction** provides a maintenance-free lifestyle with superior strength and thermal efficiency.
11. **Low-profile tilt latches** sit subtly out of view but easily engage when sashes need to be tilted in for cleaning.
12. **Four-point fusion welding** guarantees the frames and sashes are always strong and square.
13. **FlexView™ screen mesh** provides superior visibility and a hydrophobic water-repellant coating that helps keep your screens springtime clean year-round.

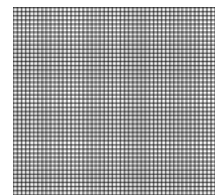
RADIANCE PLUS WINDOWS



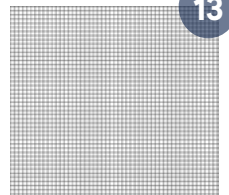
Double Hung windows are the most common style found in homes



BioMaxx locks are color matched to your window's interior.



Traditional Screens



FlexView™ Mesh

2 & 3 LITE SLIDERS

On sliding windows, both sashes effortlessly open horizontally. They allow for easy ventilation while brightening up any room.

STANDARD FEATURES

1. Traditional stepped **Bio-Maxx composite locks and keepers** are 50% stronger than standard die-cast hardware while remaining lead-free and color-true without fading, warping or chipping.
2. **Lift out sashes** allow for convenient cleaning from inside the home.
3. **Multi-chambered vinyl construction** provides a maintenance-free lifestyle with superior strength and thermal efficiency.
4. **Integrated weep system** for efficient water management.
5. Multiple **rows of weatherstripping** reduce air infiltration.
6. **Integral pull handles** will never pull loose.
7. **Full overlap interlock** ensures drafts stay out.
8. **Ventilation latch** permits secure ventilation.
9. **Fusion welded corners** are secure and weather tight.
10. **Tandem non-marking rollers** glide effortlessly on monorail track.
11. **FlexView™ screen mesh** provides superior visibility and a hydrophobic water-repellant coating that helps keep your screens clean year-round.



3 Lite Slider
1/4-1/2-1/4



3 Lite Slider
Equal Lite



OTHER STYLES



PICTURE WINDOWS

- Maximize natural light
- Companion frame style complements operating windows
- Fully fusion welded



Architectural shapes also available.



PRESTIGE CASEMENTS

- Crank hardware operates with minimal effort
- Multi-point locking system
- Ventilation is easy, even in tight spaces



ELEGANCE PATIO DOOR

- Effortlessly open to access the outdoors
- Energy efficient floor to ceiling view
- Locking hardware keeps your home secure

CHOOSE YOUR PERFECT LOOK

COLORS

Solid Colors

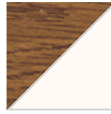


White



Tan

Laminated Interiors



Cavalier Oak



Colonial Cherry

Laminated Exteriors



Black



Bronze

Woodgrain and exterior laminates available on white

GRIDS

Patterns

Colonial



Perimeter



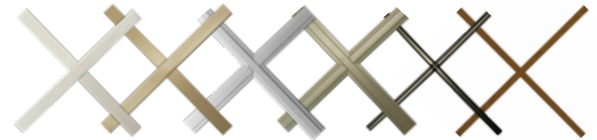
Prairie



Valance



Profiles

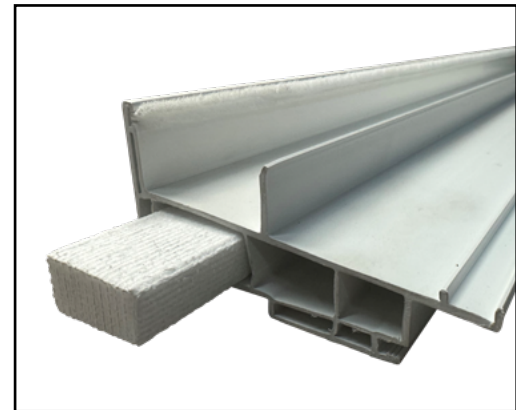


Flat, Georgian, and Pencil profiles available.
Grids are placed between the glass and are securely locked in to place, so they'll always remain straight and true.

AVAILABLE UPGRADES



Nail fin & extension jambs. Our integral nail fin option allows for flexibility of installation techniques. Extension jambs extend the depth of the window to bring it flush with the interior wall. Available in 4-9/16" or 6-9/16" depths.



Foam Filled Frame uses fluorocarbon-free foam that reflect radiant heat, improving strength and insulation.



RADIANCE PLUS WINDOWS



Full FlexScreen used high-performance PVC coated spring steel frame is damage resistant, beautifully invisible and effortless to install. Simply hold the screen in your hands, bend the sides in, and fit FlexScreen in to your screen track.



Heavy duty extruded screen with full surround finger rail protects against insect intrusion. Interior spline is protected from UV damage and secures improved visibility screen cloth.

(Available in White Only)



Sentry System multi-function locking hardware integrates the lock and tilt functions into the same lock housing, leaving an uncluttered appearance.

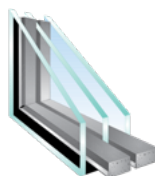
ANATOMY OF AN ENERGY EFFICIENT WINDOW

- Quality Frame Materials:** low-maintenance frame materials, like vinyl, reduce heat transfer and help to better insulate.
- Multiple Panes:** two or three panes of glass with a gas filled airspace are energy-efficient, resist impact damage and provide sound insulation.
- Low E Glass:** reflects heat and keeps heat inside in the winter and outside in the summer. UV is also reflected, protecting furnishings from fading while allowing plants to thrive.
- Gas Fill:** Inert Argon is more dense and insulates better than regular air.
- Warm Edge Spacers:** like Intercept or Super Spacer, keeps a window's glass panes the correct distance apart. Warm Edge Spacers insulate pane edges, reducing heat transfer through the window.



Intercept Spacer System

Intercept spacer system features a unique, one-piece U-channel design that effectively reduces heat loss through the window and boasts excellent seal integrity and gas retention.



Super Spacer

Super Spacer is an optional "no metal" upgrade that decreases condensation and blocks heat escape for the best thermal performance.

RADIANCE PLUS WINDOWS

PERFORMANCE DATA

No Grids							With Grids							
4600 Double Hung	Intercept		Super Spacer		VLT	ENERGY STAR 7.0	U Value	SHGC	Intercept		Super Spacer		VLT	ENERGY STAR 7.0
	U Value	SHGC	U Value	SHGC					U Value	SHGC				
IntelliGlass Low E / Argon	.29	.29	.28	.29	.54		.29	.26	.28	.26	.48			
IntelliGlass X Low E / Argon	.28	.21	.27	.21	.49	SC S	.28	.19	.27	.19	.44	SC S		
IntelliGlass N Low E / Argon	.25	.46	.24	.46	.54	N	.25	.42	.24	.42	.49	N		
IntelliGlass C Low E / Argon	.24	.20	.23	.20	.45	NC SC S	.24	.18	.23	.18	.40	NC SC S		
IntelliGlass X3 Triple Pane Low E / Argon	.25	.20	.23	.20	.45	NC SC S	.25	.18	.24	.18	.40	NC SC S		
IntelliGlass Plus Triple Pane Low E / Argon	.20	.24	.18	.24	.42	N NC	.20	.22	.19	.22	.37	N NC SC S		

No Grids							With Grids							
4650/4653 Slider	Intercept		Super Spacer		VLT	ENERGY STAR 7.0	U Value	SHGC	Intercept		Super Spacer		VLT	ENERGY STAR 7.0
	U Value	SHGC	U Value	SHGC					U Value	SHGC				
IntelliGlass Low E / Argon	.29	.29	.28	.29	.55		.29	.26	.28	.26	.49			
IntelliGlass X Low E / Argon	.28	.21	.27	.21	.50	SC S	.28	.19	.27	.19	.45	SC S		
IntelliGlass N Low E / Argon	.25	.47	.24	.47	.56	N	.25	.42	.24	.42	.50	N		
IntelliGlass C Low E / Argon	.24	.20	.23	.20	.45	NC SC S	.24	.18	.23	.18	.40	NC SC S		
IntelliGlass X3 Triple Pane Low E / Argon	.25	.20	.23	.20	.46	NC SC S	.25	.18	.24	.18	.41	NC SC S		
IntelliGlass Plus Triple Pane Low E / Argon	.20	.25	.18	.25	.43	N NC	.20	.22	.19	.22	.38	N NC SC S		

No Grids							With Grids							
4670 Picture Window	Intercept		Super Spacer		VLT	ENERGY STAR 7.0	U Value	SHGC	Intercept		Super Spacer		VLT	ENERGY STAR 7.0
	U Value	SHGC	U Value	SHGC					U Value	SHGC				
IntelliGlass Low E / Argon	.28	.31	.27	.31	.58		.28	.28	.27	.28	.51			
IntelliGlass X Low E / Argon	.27	.23	.26	.23	.53	SC S	.27	.21	.26	.21	.47	SC S		
IntelliGlass N Low E / Argon	.24	.49	.23	.49	.58	N	.24	.45	.23	.45	.52	N		
IntelliGlass C Low E / Argon	.23	.21	.22	.21	.48	NC SC S	.23	.19	.22	.19	.43	NC SC S		
IntelliGlass X3 Triple Pane Low E / Argon	.23	.21	.22	.21	.48	NC SC S	.24	.19	.23	.19	.43	NC SC S		
IntelliGlass Plus Triple Pane Low E / Argon	.18	.26	.17	.26	.45	N NC	.19	.24	.17	.24	.40	N NC		

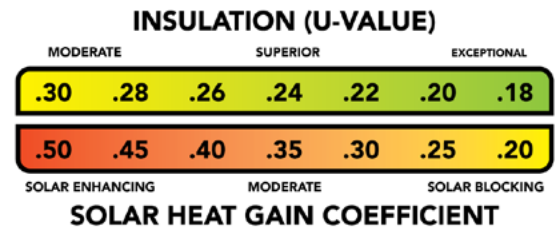
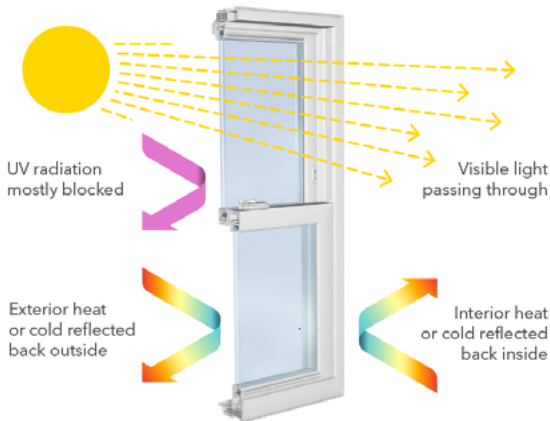
Product Rating	Up to this size window*	Structural Test Pressure PSF	Water Resistance PSF	Air Infiltration cfm/ft ²
Double Hung R-PG45	40" x 63" SS glass	45	7.5	0.12
Double Hung R-PG50	40" x 63" DS glass	50	7.5	0.09
Slider R-PG25	63" x 44" SS glass	25	4.5	0.13

The lower the **U-value**, the greater a window's resistance to heat flow and the better its insulating value.
The lower the **SHGC**, the more a product is blocking solar heat from coming through the window.
VLT - Visible Light Transmittance - lower values mean less light passing through the window.

* windows outside these size limits have not been structurally tested

HOW DOES LOW-E GLASS WORK?

The two primary components of glass performance are Insulation and Solar Control. Insulation is how well a window resists the transfer of heat or cold. It is measured as U-Value, and the lower the value, the more the window insulates. The sun is a powerful source of energy, that can be very beneficial in cold climates, or make things uncomfortably hot in warmer locations. Solar Heat Gain Coefficient measures how much solar energy passes through a window. The lower the coefficient, the more solar heat is blocked.



Low-E glass is coated with multiple specialized layers of silver and other substances that filter, block and reflect various types of energy. Vinylmax uses four different Low-E coatings to deliver the right combination of insulation and solar control, while blocking harmful UV radiation and still allowing natural light to stream in.

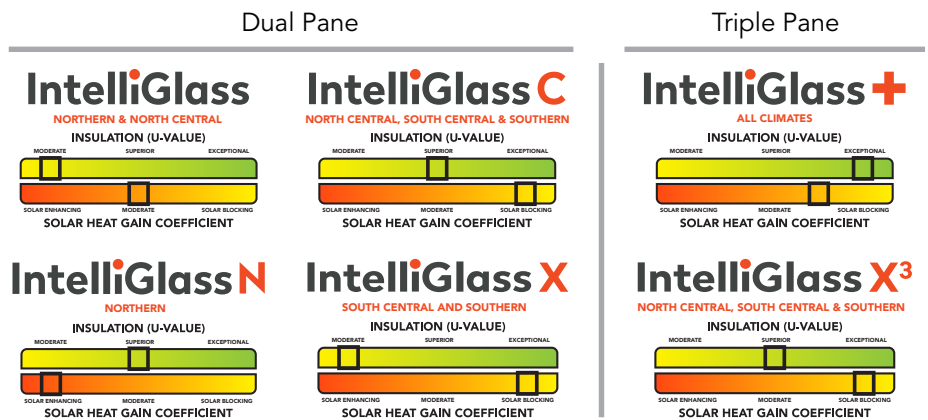
Two or even three panes of glass are combined with Warm Edge spacer to create IntelliGlass units. Each of the cavities between the panes of glass are filled with Argon gas. Argon is denser than air, so it adds extra insulation by making it more difficult for heat or cold to transmit through the glass units. Vinylmax uses high quality sealants, sophisticated filling equipment and a voluntary verification system to ensure consistent glass performance.

INTELLIGLASS PACKAGES

IntelliGlass combines the power of Low-E glass with Warm Edge spacer and Argon gas to deliver efficient management of radiation, whether it's solar, light, ultraviolet or heat. Today's windows are more than 80% glass, and selecting the ideal IntelliGlass package to meet the your home's climate challenges is the BEST way to keep your home comfortable and ensure optimum energy performance all year long. the coefficient, the more solar heat is blocked.

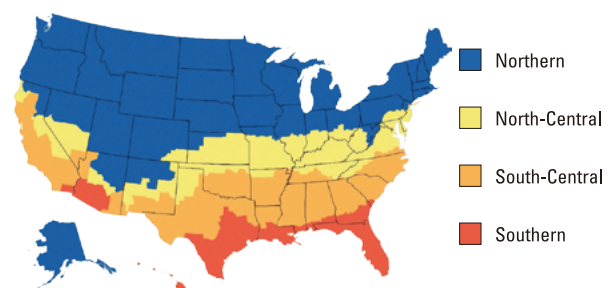
Choosing the Right Glass Package

The needs of every home are different and Vinylmax has an IntelliGlass package to perfectly fit any home's energy needs. Use this handy guide to match your desired insulation and solar control performance with your climate zone to select the ideal IntelliGlass package for your home.



ENERGY STAR 7.0

As an ENERGY STAR partner, Vinylmax is committed to manufacturing high-performance, energy-efficient windows and doors that meet and exceed the energy saving criteria established by the EPA. By selecting an ENERGY STAR certified product, not only will your home be more comfortable all year round with lower energy costs, but you will also be protecting the environment by reducing energy consumption.





WARRANTY

Many windows claim to carry a lifetime warranty, but Vinylmax replacement windows are backed by one of the strongest window warranties available.

Our Lifetime Limited Warranty includes:

VINYL - warranted against warping, chipping, cracking, blistering rotting.

GLASS - warranted against visual obstruction, seal failure, spontaneous AND accidental breakage.

SCREEN - frame warranted against cracking or breaking, cloth warranted against rotting or staining.

PARTS & HARDWARE - are warranted against cracking, breaking or failing during normal use.

We want you to love your windows for as long as you live in your home. In fact, we want the next homeowner to love them, too, so the warranty is transferable.*

*Limitations apply.



THE VINYLMAX STORY

Founded in 1982 by the Doerger family and manufacturing a mere five windows per day, the Vinylmax legacy began to unfold. As one of the very first vinyl window manufacturers in the United States, Vinylmax embraced the philosophy that quality custom windows manufactured quickly would inspire loyalty in its customers.

Today, the next generation of the Doerger family continues to embrace that philosophy. Millions of American homes are more beautiful and more energy efficient, thanks to Vinylmax windows.

vinylmax
windows

WINDOW+DOOR
TOP 100
MANUFACTURERS



2921 McBride Court
Hamilton, OH 45011
(800) 847-3736
vinylmax.com

Manufactured exclusively for

