

2023 Bay/Bow Order Form



Customer Name: _____
 Customer Contact(S): _____

Job Name: _____
 PO #: _____

Items marked with an (*) are required for quoting/ordering

*Quantity: _____
 *Jamb Depth: _____

*Size (Exact Only): _____

*Wood: Birch (used for painting)
 Red Oak (used for staining)

*Installation Type: Frame Offset Seat - 1 5/16" Added to Jamb Depth
 (see information page for additional details)
 Frame Full Seat - 1 3/16" Added to Jamb Depth
 Masonry Full Seat - No addition to Jamb Depth

*Vinyl Color Exterior: White (White-397)
 Tan (Beige)
 Bronze

*Unit Type (choose one): Bay 3-Lite
 Bow 3-Lite
 Bow 4-Lite
 Bow 5-Lite

*Degree (choose one)
 15 Degree
 30 Degree
 45 Degree
 10 Degree
 15 Degree
 10 Degree
 15 Degree
 10 Degree
 15 Degree

*Flanker Size (choose one)
 17" Flanker
 20.5" Flanker
 27.5" Flanker
 Quarter Half Quarter
 (Only equal available)
 (Only equal available)
 (Only equal available)

Interior Paint/Stain (optional):

Dark Oak (match Cavalier Oak Lami)
 Dark Cherry (match Col Cherry Lami)
 Almond (Paint)
 Beige (Paint)
 Black (Paint)
 Cinnamon (Stain)
 Clay (Paint)
 Clear Coat
 Early American (Stain)
 Light Cherry (Stain)
 Light Oak (Stain)
 Mahogany (Stain)
 Maple (Stain)
 Pecan (Stain)
 Walnut (Stain)
 White 397 (Paint)

*Support: Premium Clamp Hanging Support (STD)
 Cleat Hanging Support
 No Hanging Support

Knee Brace: Primed Knee Brace
 Painted Knee Brace
 No Knee Brace (STD)

Laminated Interior Color (see options page): _____
 Full Lamination
 Laminated Seat Only

*Window information:
 Type (DH-PW-DH, CASE-PW-CASE, ETC): _____
 Window Color: _____
 (Exterior color must match Bay Vinyl color)

Casing Trim Package (see options page): _____

Glass Type/Option: _____

Lighting: LED Recessed
 Xenon Low Voltage Qty (2 or 3): _____

Screen Option: _____

Grid Pattern: _____

Grid Material: _____

Notes: _____

Roof System (see options page): _____

2023 Bay/Bow Form Options Page



Additional information may be available if needed. Please email orders@vinylmax.com with any questions

Interior Trim Packages

The rosette & apron are what set these packages apart. All trim packages come with a standard 3" reveal and squilid edge banding. The stool uses pre-glued dowel pins for attachment to the seat board. Each component has "factory-fit" edges and is pre-fit by the factory. Packages A-C use optional style interior casing and packages D-E use fluted casing.

Trim Package A

Colonial Casing
Stool & Apron

Trim Package B

Rosette
Colonial Casing
Stool & Apron

Trim Package C

Header
Colonial Casing
Stool & Apron

Trim Package D

Rosette
Fluted Casing
Stool & Apron

Trim Package E

Header
Fluted Casing
Stool & Apron

Laminated Interiors

Interior lamination adds durability – helping to protect against dings and water damage. Five standard colors of laminated interiors are available on all projection windows. Choose from seat board only lamination or entire interior plywood lamination.

Head & Seat Board

White	Black	Tan	Light Oak
Dark Wood	Dark Cherry	Light Cherry	Maple

Seat Board Only

Bernard	Louise	Hazel

Solid-Surface Seat Boards

This 1/2" thick solid-surface inlay creates a durable, waterproof seat board with a flair all its own.

White	Beach Sand	Desert Sand	Venetian Sand	Platinum Granite	Graphite Granite

Cleat Cable Support Kit

Cables laced & locked around a cleat
Hanger is adjustable & when locked will not slip

Hand Applied Interior Stains

Light Oak	Light Cherry	Cinnamon
Dark Oak	Dark Cherry	Mahogany
Maple	Early American	Walnut

Xenon Low-Voltage OR LED Lights

Plug-In

Hardwire

Premium Cable Support Kit Features:

- This hanger kit is "best-in-class".
- Uses patented clamping system for cable anchoring.
- Easy-to-install! Faster and simpler than any other type of kit on the market.
- ATI tested to hold 1,500 lbs. per cable with ZERO slipping of the cables.

Interior Paint

White	Black	Clay	Clay

Roof System

- *Aluminum Standard or Concave
- *Copper Standard or Concave
- *Plywood
- *4" and 6" Facia and Crown (optional)
- *Matching Metal Counter Flashing (optional)

- Plywood roofs are completely assembled & ready for quick install right out of the box.
- Metal roofs are completely assembled from painted aluminum or copper.

Standard Pitch

Concave

- Every Unit Comes Standard With:
- Insulated Seat Board (insulated to jamb or to interior)
- Beveled Pre-Fit Window Stop & Installation Trim.
- Dual Mullion System: Steel Rod + Solid LSL Lumber ("Timberstrand")
- Sloped Sill w/ Weeped Panning System (Helps Prevent Water Infiltration)
- Industry Leading Cable Support System ("Hanger Kit")



Additional information may be available if needed. Please email orders@vinylmax.com with any questions

Frame-Offset Seat

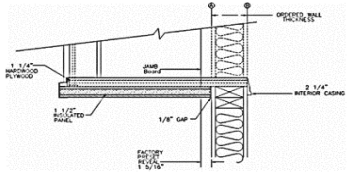
*Used for common 4 9/16 or 6 9/16 walls, normally clad in siding

*Seats are made so that the insulated panel butts up to the exterior sheathing.

*1 5/16" is added to the requested jamb depth

Minimum Wall Thickness

Frame Installation	
Offset Seat	
45° Bay	3-3/8"
30° Bay	3-13/16"
15° Bay	4-1/2"
10° 3-Lite Bow	4-1/2"
15° 3-Lite Bow	4-1/2"
10° 4-Lite Bow	4-7/16"
15° 4-Lite Bow	4-9/16"
10° 5-Lite Bow	4-7/16"
15° 5-Lite Bow	4-13/16"



Frame-Full Seat

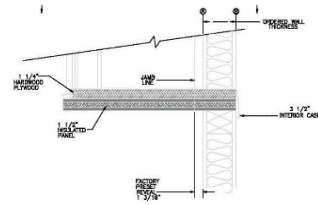
*A hybrid application meant for stone veneer or if you are unsure of the frame offset

*Seats are made so that the insulated panel stops flush with the interior seat.

*1 3/16" is added to the requested jamb depth

Minimum Wall Thickness

Manufacturer Minimum Wall Thickness Requirements	
Frame Installation - Full Seat	
45° Bay	3-1/2"
30° Bay	3-15/16"
15° Bay	4-5/8"
10° 3-Lite Bow	4-5/8"
15° 3-Lite Bow	4-5/8"
10° 4-Lite Bow	4-9/16"
15° 4-Lite Bow	4-11/16"
10° 5-Lite Bow	4-9/16"
15° 5-Lite Bow	3-15/16"



Masonry-Full Seat

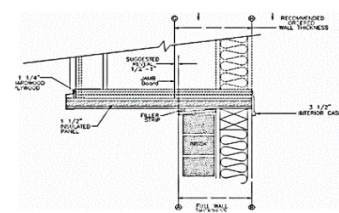
*Used for any wall with masonry sheathing (brick, stone, cement block, etc.).

*Seats are made so that the insulated panel stops flush with the interior seat

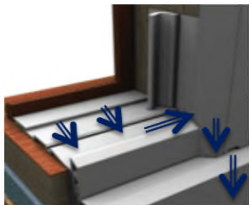
*No dimension is added to the requested jamb depth.

Minimum Wall Thickness

Masonry Installation	
Full Panel	
45° Bay	4-11/16"
30° Bay	5-1/8"
15° Bay	5-13/16"
10° 3-Lite Bow	5-13/16"
15° 3-Lite Bow	5-13/16"
10° 4-Lite Bow	5-3/4"
15° 4-Lite Bow	5-7/8"
10° 5-Lite Bow	5-3/4"
15° 5-Lite Bow	5-1/8"



Sloped Sill Pan



- Water flows away from interior to evacuation holes.
- Outside ledge is sloped and will not collect water.



Insulated Seat Board:

- Every frame comes insulated, and it is seamlessly integrated into our design.
- Constructed with 1" thick Dow polystyrene foam.
- The foam is **fully laminated** to 1/2" thick vinyl backed plywood then attached to the 1 1/4" plywood seat board.
- The 2 3/4" thick seat provides a insulating value greater than R7.
- R7+ exceeds current insert window R values with some to spare.
- The insulated panel can be ordered insulated to jamb ("Offset") or all the way to the interior of frame ("Entire Seat", "Full Panel", "Flat Bottom").



MOISTURE RESISTANT FILLER

The Timberstand® mullion not only provides unprecedented structural stability to the frame but also acts as moisture resistant filler. It effectively eliminates condensation associated with ambient air and serves as a non-conductive thermal break.

GENERAL INFORMATION

- Projection windows are built to custom opening sizes.
- Frames can be built to accommodate any wall thickness.
- Many different insert window (sash) combinations are available.
- All normal replacement window options are available for the insert windows (sash).
- A variety of projection angles:
 - 15-, 30- or 45-degree Bay Window Styles
 - 10- and 15-degree Bow Window Styles with your choice of three, four or five lites
- All units are available in either Red Oak (for staining) or Birch (for painting).

FURNITURE GRADE 1-1/4" HARDWOOD PLYWOOD CONSTRUCTION

Available in Red Oak or Birch, each piece of plywood is inspected at multiple points in the production process to help assure top-notch material quality. A rule of thumb is Red Oak is meant for staining and Birch is meant for painting.

Exterior Weep Holes

