



THE
NEWTON
SERIES

WHY VINYLMAX?



Quality First. In our facility, we utilize the most modern manufacturing methods and technology to produce the highest quality vinyl replacement windows. This results in the best value for your home.



Family Values. As a family owned and operated business, we value and respect our employees and their families as well as the millions of families who have our windows in their homes.



Warranty. To protect your investment and our reputation, we back our products with a Lifetime Limited Warranty so strong that it will exceed your expectations.



Made in the USA. Vinylmax is passionate about American manufacturing, American jobs and the American economy. That is why we source the majority of our components from other American manufacturers and fabricate our windows in our Ohio and New York factories. When you buy Vinylmax windows, you can be sure you are not only getting American quality, but also supporting and sustaining local communities.



Our Process. Modern homes for modern families require windows designed to aesthetically and efficiently complement them. At Vinylmax, we utilize state-of-the-art manufacturing technology to produce both energy efficient windows and patio doors with features and accessories with today's family in mind.



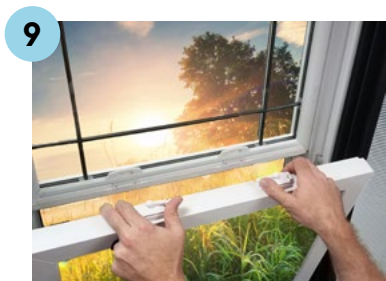
STANDARD FEATURES

1. **Multi-chambered vinyl construction.** Maintenance-free vinyl provides superior strength and thermal efficiency yet won't weather, chip, warp or rot.
2. **Fusion welded frame and sashes.** Four-point fusion welding ensures sashes and frames are square and true and the corners will never pull apart.
3. **IdeaSeal™ triple protection.** Mylar fin triple weatherstripped sashes and an integral interlock with two rows of mylar fin weatherstrip, plus foam filled bulb seal means the elements stay out.
4. **Dual function partitioned sloped sill with directional weep.** Newton's unique partition forms a negative pressure pocket that keeps the sash securely in place, even in the most adverse weather conditions. The slope of the sill and a concealed channel system carries water away from the home's interior.
5. **Double strength dual pane IntelliGlass.** Optimal energy performance is further enhanced by an accidental glass breakage warranty. Triple pane options are also available.
6. **Heavy duty extruded half screen with UltraVue mesh.** Smooth, wide face blends with window exterior. Interior spline is protected from UV damage.
7. **Neopor™ Rigid Thermal Insulation filled frame.** Fluorocarbon-free foam with heat-reflecting graphite particles improves strength and insulation.
9. **Multi-function tilt locks & keepers.** Heavy-duty die cast locks and keepers integrate the "tilt for easy cleaning" feature into the lock, eliminating unsightly tilt latches. Positive action locks pull window together securely. Face-mounted keeper provides multi-plane stability and security.
10. **Pivot True balance system.** Strong, stainless steel coils combine with a high impact polymer shoe to provide effortless fingertip operation. Metal on metal pivot connection is durable, while the low-friction design provides whisper quiet operation.
12. **Deluxe night ventilation locks.** Push-button activated secondary locks permit limited, secure opening of the window from the bottom or top. Meets ASTM F88-97 (Grade 10) forced entry resistance standards.
13. **Beveled exterior profile.** The beveled exterior frame profile provides visual interest that complements any home style.
14. **Cove-crafted sash interiors with integral pull rails.** Decorative cove details and even sightlines mimic traditional window styling for distinctive beauty.
15. **Low profile dedicated head.** Deliberately engineered for strength and efficiency while maximizing daylight glass area.
16. **Shadow groove welds.** Consistent weld quality emulates the look of finely crafted wood windows.
17. **Concealed stop system.** Sash stops are concealed, leaving the window jamb interior uncluttered and uninterrupted.
18. **Optional integral nail fin.** Sturdy fin allows flexibility of installation for all applications, including new construction and full tear outs.

THE NEWTON SERIES



DOUBLE HUNG





PICTURE WINDOWS

Picture windows are fully fusion welded and maximize natural light. Companion frame style complements operating windows.

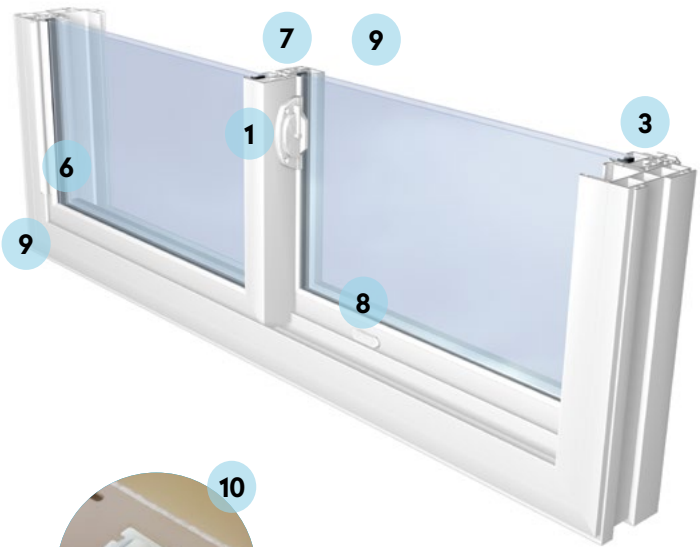


Architectural shapes are available.



STANDARD FEATURES

- Heavy-duty die cast locks and keepers** pull the window together securely. Face-mounted keeper provides multi-plane stability and security.
- Lift out sashes** allow for convenient cleaning from inside the home.
- Multi-chambered vinyl construction** provides a maintenance-free lifestyle with superior strength and thermal efficiency.
- Integrated weep system** for efficient water management.
- Multiple **rows of weatherstripping** reduce air infiltration.
- Integral pull handles** will never pull loose.
- Full overlap interlock** ensures drafts stay out.
- Ventilation latch** permits secure ventilation.
- Fusion welded corners** are secure and weather tight.
- Tandem non-marking rollers** glide effortlessly on monorail track.
- UltraVue® insect screening with Water Shed Technology™** preserves optical clarity by shedding water and resisting dirt and grime for a sharp, more brilliant outward view with 20% better air flow.



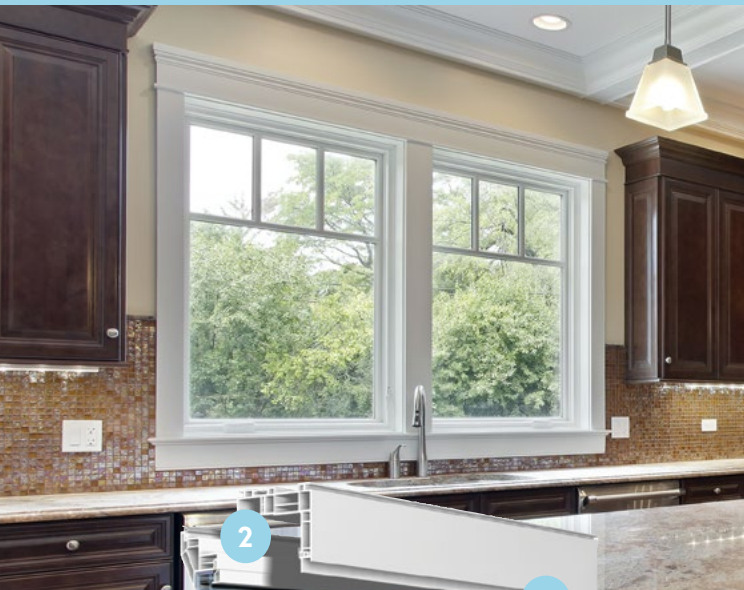
3 Lite Slider
1/4-1/2-1/4



3 Lite Slider
Equal Lite



PRESTIGE CASEMENTS & AWNINGS



STANDARD FEATURES

1. **Fusion welded frame and sash corners** are secure, weathertight and never pull apart.
2. **Multi-chambered vinyl frame and sash** are energy efficient, maintenance-free and last a lifetime.
3. **Beveled sash exterior** gracefully accents every architectural style.
4. **Double paned IntelliGlass high performance insulated glass** produces optimal energy performance.
5. **Intercept warm-edge spacer system** has proven seal integrity and conducts less heat and cold than other systems.
6. **Color-matched compression seals** are foam filled and create a water and weathertight seal around the entire opening on both the frame and the sash
7. **Roto X-Drive operating hardware** effortlessly handles the weight of even the heaviest sashes with smooth, quiet operation.
8. **Sealed operator housing and protected gear drive** minimizes contaminants from affecting operation.
9. **Patented laser-cut gear teeth** are hardened for superior strength.
10. **Fold-down crank handle** subtly nests into the operator housing to prevent interference with window treatments.
11. **Sashes open a full 90 degrees** for both maximum ventilation and for cleaning both sides of the glass from inside the home.
12. **Multi-point locking system** secures the sash tightly into the frame in at least three locking locations.
13. **Sequential lock operation** assists sash pull in for effortless locking of even the tallest windows.
14. **Single lever lock handle** actuates the locking system with an audible click to signify open/closed positions.
15. **Color Matched Screen** with concealed retention system and UltraVue excellent visibility screen mesh.

One, two and three lite configurations available.

BAYS & BOWS



STANDARD FEATURES

1. **Color-matched, weatherproof PVC exterior** is maintenance free and resists scratching and denting.
2. **Hand-selected 1-1/4" furniture-grade Birch or Oak hardwood interior** is 67% thicker than typical products and won't delaminate or show glued seams.
3. **Solid Timberstrand laminated wood mullion** construction with "walled in" window openings provide superior strength and will not twist or warp.
4. **6" threaded lagbolt construction** anchors the head and seatboard for support and durability.
5. **Veneer-banded edges** for a beautifully finished interior reveal.
6. **Eyebolt anchors and concealed adjustable cable support system** allows precise leveling of the window's pitch, while providing sturdy support.
7. **Optional low-voltage recessed lighting** highlights accent pieces.
8. **Optional insulated seat** increases comfort. Choose Superior R9 or Ultimate R21.

Bay and Bow windows add special space to any room and dimension to the home exterior. Bays and Bows are custom made to match your other windows and are available with double hungs, picture windows or casements. Three lite bays and three, four, or five lite bows available.



*See Prestige brochure for full list of options and more information

HIGH POINTE PATIO DOORS

Superior construction and durability perfect for a lively home and a lovely view.

STANDARD FEATURES

1. **Attractive modern handle set** is ergonomic for easy operation while maintaining a complimentary and elegant appearance.
2. **Keyed lockset** offers greater security and peace of mind when away.
3. Internal hardware utilizes multiple points of engagement including an **anti-slam mechanism** to prevent damage to the door.
4. Operating panels glide on a **unique monorail system** for smooth and effortless use.
5. Available in **dual or triple paned configurations with tempered glass** for ultimate energy performance while maximizing safety.
6. **Heavy-Duty extruded aluminum sliding screen** glides on multiple rollers and utilizes **UltraVue mesh** for a lifetime of trouble-free use.
7. The High Pointe's **Low-profile threshold** makes passage in and out a simple affair.
8. Multiple **rows of weatherstripping combined with fully interlocking panels** keep your home secure and free from drafts or leaks.
9. **6" multi-chambered PVC mainframe** combines structural integrity with maintenance-free efficiency.
10. **End-adjustable ball bearing tandem steel rollers** allow custom tuning for smooth, quiet operation.
11. **Dual point stainless steel mortise lock** ensures ultimate security by engaging in multiple areas.
12. **Panels are steel-reinforced vertically** and will never warp or bow.
13. Each door is **field reversible** allowing flexibility during installation.

*See High Pointe brochure for full list of options and more information

AVAILABLE UPGRADES

KICK OPERATED TOE LOCK



Optional secondary toe lock provides additional security when engaged. This lock can be installed as a secondary security lock to lock the door in fully closed position, or as a vent lock, to allow the door to be locked while partially open for fresh air flow.

BLINDS BETWEEN THE GLASS

By choosing our optional blinds, you take control of privacy, security, and daylight. Fingertip adjustment effortlessly operates tilt, raise and lower operations. Sturdy aluminum blinds are sealed between two panes of Low-E tempered glass. Blinds are covered by 10-year warranty against material and operational defects.



CHOOSE YOUR PERFECT LOOK

COLORS

Solid Colors



White



Tan

Exterior Finishes



Butter



Tan



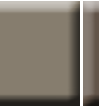
Clay



Pebble



Silver



Terra



Cocoa



Chestnut



Chocolate



Bronze



Black



Forest



Brick



GRIDS

Colonial



Perimeter



Prairie



Valance



Flat, Georgian, and Pencil profiles available.
Grids are placed between the glass and are securely locked in to place, so they'll always remain straight and true.

SCREENS

Newton windows features a heavy duty screen with UltraVue improved visibility screen mesh. UltraVue's nearly invisible screen mesh allows you to feel the breeze and absorb your view without swatting at pesky bugs.

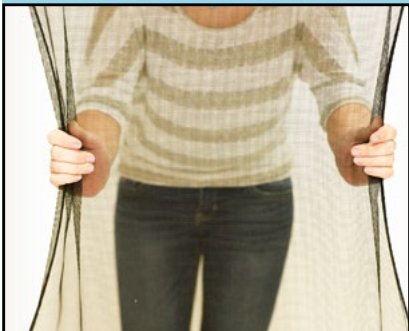


Heavy Duty 1/2 Screen



Full Screen

UPGRADE OPTION: FLEXSCREEN



High-performance PVC coated spring steel frame is damage resistant, beautifully invisible and effortless to install. Simply hold the sides in your hands, bend the sides in, and fit FlexScreen in to your screen track.

BENEFITS OF ULTRAVUE SCREEN WITH WATER SHED TECHNOLOGY

Water Shed Technology gives BetterVue a clear view for the life of the product by repelling water and resisting dirt and grime, making them much less likely to accumulate on the screen.

- Durable, hydrophobic coating will not wash off
- Sheds water and debris during rainstorm or with hose sprayer
- Preserves viewing clarity for more brilliant outward views
- Remains cleaner longer and increases life expectancy of the screening



ANATOMY OF AN ENERGY EFFICIENT WINDOW

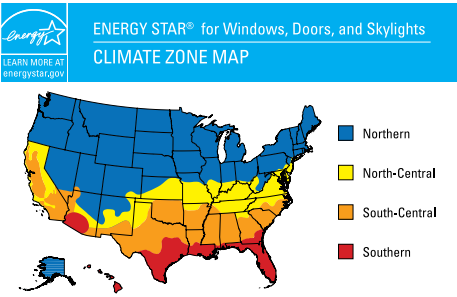
- 1. **Quality Frame Materials:** low-maintenance frame materials, like vinyl, reduce heat transfer and help to better insulate.
- 2. **Multiple Panes:** two or three panes of glass with a gas filled airspace are energy-efficient, resist impact damage and provide sound insulation.
- 3. **Low E Glass:** reflects heat and keeps heat inside in the winter and outside in the summer. UV is also reflected, protecting furnishings from fading while allowing plants to thrive.
- 4. **Gas Fill:** inert argon and krypton are more dense and insulate better than regular air.
- 5. **Warm Edge Spacers:** like Intercept or Super Spacer, keep a window's glass panes the correct distance apart. Warm Edge Spacers insulate pane edges, reducing heat transfer through the window.



SPACER SYSTEMS

Intercept Spacer System
features a unique, one-piece, tin-plated U-channel design that creates an effective thermal barrier to help reduce conducted heat loss through the window. Its sealed, one-piece design makes Intercept spacers stronger and better at retaining insulating gas than many conventional designs.

Optional Super Spacer
Warm edge Super Spacer is the "no metal" upgrade to help your windows reduce energy costs. Its 100% memory foam formula stands up to a wide range of temperatures and is designed to provide outstanding UV resistance. It dramatically decreases condensation and blocks heat escape for best thermal performance.



Installing ENERGY STAR qualified windows and doors lowers energy bills and saves you money.

With more efficient windows, you also use less energy, which reduces greenhouse gas emissions from power plants. Can you feel your carbon footprint shrinking?

Newton windows can be specified with high-performance glass to meet ENERGY STAR criteria in each specific climate zone.

HOW DOES LOW-E GLASS WORK?



Low Emissivity (Low-E) glass is one of the cornerstones of any energy efficient window. Its primary purpose is managing radiation, whether it's solar, light, ultraviolet, or heat. The secret is two or three microscopic layers of silver, which reflect heat back to its source. Other layers in the Low-E coating filter ultraviolet and solar radiation, while allowing visible light through.

Glass packages are filled with either argon or krypton gas in between the panes of glass. Both gases are denser than air, so they make it more difficult for heat or cold to transmit through the glass units. We use high quality sealants, sophisticated filling equipment and a voluntary verification system to ensure consistent glass performance.

INTELLIGLASS PACKAGES

		GLASS PANES	LOW-E TYPE	AIRSPACE FILLING
	Northern & North Central climates	2	Standard	Argon
	North Central, South Central & Southern climates	2	Solar	Argon
	All climates	3	Solar	Argon
	All climates	3	Standard	Argon
	All climates	3	Standard	Krypton

Triple Pane Glass
is up to 50% more energy efficient than dual pane. Installing triple pane windows also reduces noise from the outside and fading from the sun.

PERFORMANCE DATA

	No Grids						With Grids					
	Intercept			Super Spacer			Intercept			Super Spacer		
4800 Double Hung	U Value	SHGC	VLT	U Value	SHGC	Energy Star	U Value	SHGC	VLT	U Value	SHGC	Energy Star
IntelliGlass Low E / Argon	.28	.38	.53	.27	.29	N NC	.28	.34	.47	.27	.26	N NC
IntelliGlass X Low E / Argon	.28	.22	.50	.27	.22	NC SC S	.28	.20	.45	.27	.20	NC SC S
IntelliGlass X3 Triple Pane Low E / Argon	.24	.21	.46	.23	.21	N NC SC S	.25	.19	.41	.23	.19	N NC SC S
IntelliGlass Plus Triple Pane Low E / Argon	.20	.24	.40	.18	.24	N NC SC S	.20	.22	.35	.18	.22	N NC SC S
IntelliGlass Supreme Triple Pane Low E / Krypton	.18	.24	.40	.16	.24	N NC SC S	.18	.22	.35	.16	.22	N NC SC S

	Intercept						Super Spacer					
	U Value	SHGC	VLT	U Value	SHGC	Energy Star	U Value	SHGC	VLT	U Value	SHGC	Energy Star
4850/4853 Slider	U Value	SHGC	VLT	U Value	SHGC	Energy Star	U Value	SHGC	VLT	U Value	SHGC	Energy Star
IntelliGlass Low E / Argon	.28	.37	.52	.27	.29	N NC	.28	.34	.47	.27	.26	N NC
IntelliGlass X Low E / Argon	.28	.22	.50	.27	.22	NC SC S	.28	.20	.44	.27	.20	NC SC S
IntelliGlass X3 Triple Pane Low E / Argon	.24	.21	.46	.23	.21	N NC SC S	.24	.19	.41	.23	.19	N NC SC S
IntelliGlass Plus Triple Pane Low E / Argon	.20	.24	.39	.18	.24	N NC SC S	.20	.22	.35	.18	.22	N NC SC S
IntelliGlass Supreme Triple Pane Low E / Krypton	.17	.24	.39	.16	.24	N NC SC S	.18	.22	.35	.16	.22	N NC SC S

	Intercept						Super Spacer					
	U Value	SHGC	VLT	U Value	SHGC	Energy Star	U Value	SHGC	VLT	U Value	SHGC	Energy Star
4870 Picture Window	U Value	SHGC	VLT	U Value	SHGC	Energy Star	U Value	SHGC	VLT	U Value	SHGC	Energy Star
IntelliGlass Low E / Argon	.27	.39	.55	.26	.30	N NC	.27	.36	.49	.26	.27	N NC
IntelliGlass X Low E / Argon	.27	.23	.52	.26	.23	N NC SC S	.27	.21	.47	.26	.21	N NC SC S
IntelliGlass X3 Triple Pane Low E / Argon	.23	.22	.48	.22	.22	N NC SC S	.23	.20	.43	.22	.20	N NC SC S
IntelliGlass Plus Triple Pane Low E / Argon	.18	.25	.41	.17	.25	N NC SC S	.18	.23	.37	.17	.23	N NC SC S
IntelliGlass Supreme Triple Pane Low E / Krypton	.16	.25	.41	.15	.25	N NC SC S	.16	.23	.37	.15	.23	N NC SC S

Product Rating	Up to this size window*	Design Pressure PSF	Water Resistance PSF	Air Infiltration cfm/ft²
Double Hung R-PG45	40" x 63" DS glass	45	7.5	0.12
Double Hung R-PG50	40" x 63" DS glass	50	7.5	0.09
Slider R-PG25	63" x 44" DS glass	25	4.5	0.13

2020 Energy Star Most Efficient

The lower the **U-value**, the greater a window's resistance to heat flow and the better its insulating value
The lower the **SHGC**, the more a product is blocking solar heat from coming through the window.
VLT - Visible Light Transmittance - lower values mean less light passing through the window.

* windows outside these size limits have not been structurally tested

WHAT WE MEASURE AND WHY

U-Value

measures the rate of heat transfer and tells you how well the window insulates. The lower the U-Value, the better the window insulates.

Solar Heat Gain Coefficient (SHGC)

measures the fraction of solar energy transmitted and tells you how well the product blocks heat caused by sunlight. SHGC is measured on a scale of 0 to 1. The lower the SHGC, the less solar heat the window transmits.

Visible Light Transmittance

measures the fraction of visible light transmitted through the window. The higher the Visible Light Transmittance, the more light shines through.



WARRANTY

Many windows claim to carry a lifetime warranty, but Newton windows are backed by one of the strongest window warranties available.

Our Lifetime Limited Warranty includes:

VINYL - warranted against warping, chipping, cracking, blistering rotting.

GLASS - warranted against visual obstruction, seal failure, spontaneous AND accidental breakage.

SCREEN - frame warranted against cracking or breaking, cloth warranted against rotting or staining.

PARTS & HARDWARE - are warranted against cracking, breaking or failing during normal use.

We want you to love your windows for as long as you live in your home. In fact, we want the next homeowner to love them, too, so the warranty is transferable.*

*Limitations apply.



THE VINYLMAX STORY

Founded in 1982 by the Doerger family and manufacturing a mere five windows per day, the Vinylmax legacy began to unfold. As one of the very first vinyl window manufacturers in the United States, Vinylmax embraced the philosophy that quality custom windows manufactured quickly would inspire loyalty in its customers.

Today, the next generation of the Doerger family continues to embrace that philosophy. Millions of American homes are more beautiful and more energy efficient, thanks to Vinylmax windows.

vinylmax
windows

2921 McBride Court
Hamilton, OH 45011
(800) 847-3736
www.vinylmax.com

