

vinylmax
windows

Passion for Homes and Families



THE
FRANKLIN
COLLECTION

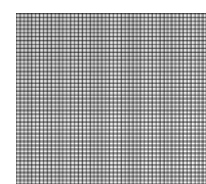
STANDARD FEATURES



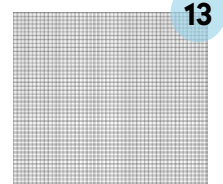
1. **Cove molded sash detail** replicates the look of classic wood windows.
2. **Biomaxx composite locks and keepers** are 50% stronger than standard die-cast hardware while remaining lead-free and color-true, without fading, warping or chipping.
3. **Dual Function partitioned sloped sill** forms a negative pressure pocket that keeps sashes securely in place and water flowing away from your home, even during the most adverse weather conditions.
4. **Shadow grooved sash welds** replicate the classic look of mitered wood corners.
5. **IdeaSeal™ triple protection weather seal** keeps the indoor and outdoor environments separate with an integral interlock, sill compression bulb seal, and multiple rows of weatherstripping.
6. **Full balance covers** hide internal systems while eliminating unsightly visible sash stops.
7. **Integral lift and pull rails** are ergonomically engineered for smooth operation while remaining aesthetically appealing.
8. **Dual push-button forced entry resistant ASTM night locks** limit sash movement for your family's safety and security.
9. **Effortless pivot balance system** utilizes stainless steel coils making sash operation smooth, effortless and whisper-quiet.
10. **Multi-chambered vinyl construction** provides a maintenance-free lifestyle with superior strength and thermal efficiency.
11. **Low-profile tilt latches** sit subtly out of view but easily engage when sashes need to be tilted in for cleaning.
12. **Four-point fusion welding** guarantees the frames and sashes are always strong and square.
13. **BetterVue® insect screening with Water Shed Technology™** preserves optical clarity by shedding water and resisting dirt and grime for a sharp, more brilliant outward view with 20% better air flow.



BioMaxx locks are color matched to your window's interior.



Typical Screen



BETTERVUE
IMPROVED VISIBILITY INSECT SCREEN

CHOOSE YOUR PERFECT LOOK

COLORS

Solid Colors



White



Tan

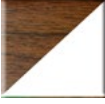
Laminated Interiors



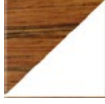
Cavalier Oak



Natural Oak



Colonial Cherry



Vintage Pecan

Laminated Exteriors



Tan



Clay



Bronze

Painted Exterior Finishes



Tan



Clay



Forest



Brick



Silver



Chocolate



Butter



Bronze



Terra



Cocoa



Black



Chestnut



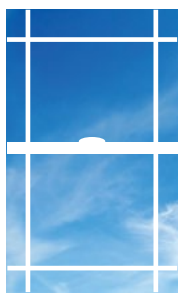
Pebble

GRIDS

Colonial



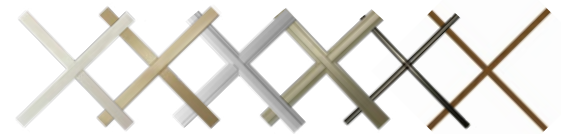
Perimeter



Prairie



Valance

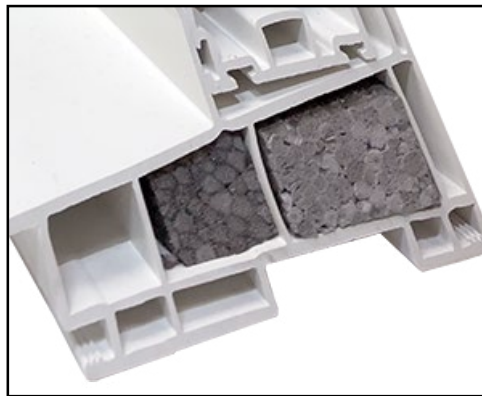


Flat, Georgian, and Pencil profiles available.
Grids are placed between the glass and are securely locked into place, so they'll always remain straight and true.

AVAILABLE UPGRADES



Heavy duty extruded screen with full surround finger rail protects against insect intrusion. Interior spline is protected from UV damage and secures BetterVue improved visibility screen cloth.



Neopor® foam filled frame
BASF Neopor® GPS is a graphite polystyrene rigid foam insulation, strategically custom-fitted in energy chambers in the window frame and sash vinyl. It is comprised of many small pockets of air within a polymer matrix containing graphite. The graphite reflects radiant heat energy like a mirror, increasing the window's resistance to the flow of heat, or R-Value. Neopor® actually increases in R-value as the temperature outside drops. Neopor GPS earned GREENGUARD Gold Certification.

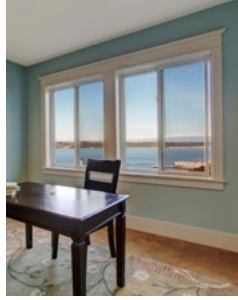


Sentry System multi-function locking hardware integrates the lock and tilt functions into the same lock housing, leaving an uncluttered appearance.

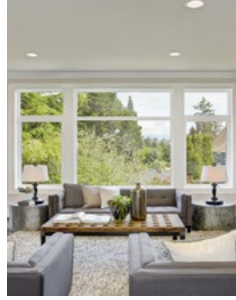
WINDOW STYLES



Double Hung



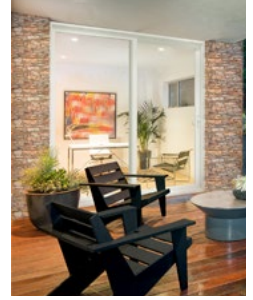
Slider



Picture Window



Casement & Awning



Patio Doors

GLASS

IntelliGlass
high performance

Northern & North Central climates

GLASS PANES

2

LOW-E TYPE

Standard

AIRSPACE FILLING

Argon

IntelliGlass X
solar control

North Central, South Central & Southern climates

2

Solar

Argon

IntelliGlass X³
solar control triple pane

All climates

3

Solar

Argon

IntelliGlass +
high performance triple pane

All climates

3

Standard

Argon

IntelliGlass Kr
supreme performance triple pane

All climates

3

Standard

Krypton



Triple Pane Glass is up to 50% more energy efficient than dual pane. Installing triple pane windows also reduces noise from the outside and fading from the sun.



All products manufactured by Vinylmax are backed by a Lifetime Limited Warranty. All vinyl, glass, seals, screens and hardware are covered by this warranty as long as the original purchaser is residing in the home. Elements of this warranty coverage are transferable to the next homeowner. We ensure your peace of mind.

ENERGY STAR® for Windows, Doors, and Skylights
CLIMATE ZONE MAP

LEARN MORE AT energy.gov

- Northern
- North-Central
- South-Central
- Southern

Installing ENERGY STAR qualified windows and doors lowers energy bills and saves you money. With more efficient windows, you also use less energy, which reduces greenhouse gas emissions from power plants.

vinylmax

windows

2921 McBride Court
Hamilton, OH 45011
(800) 847-3736
www.vinylmax.com

