

**vinylmax**  
windows

Passion for Homes and Families

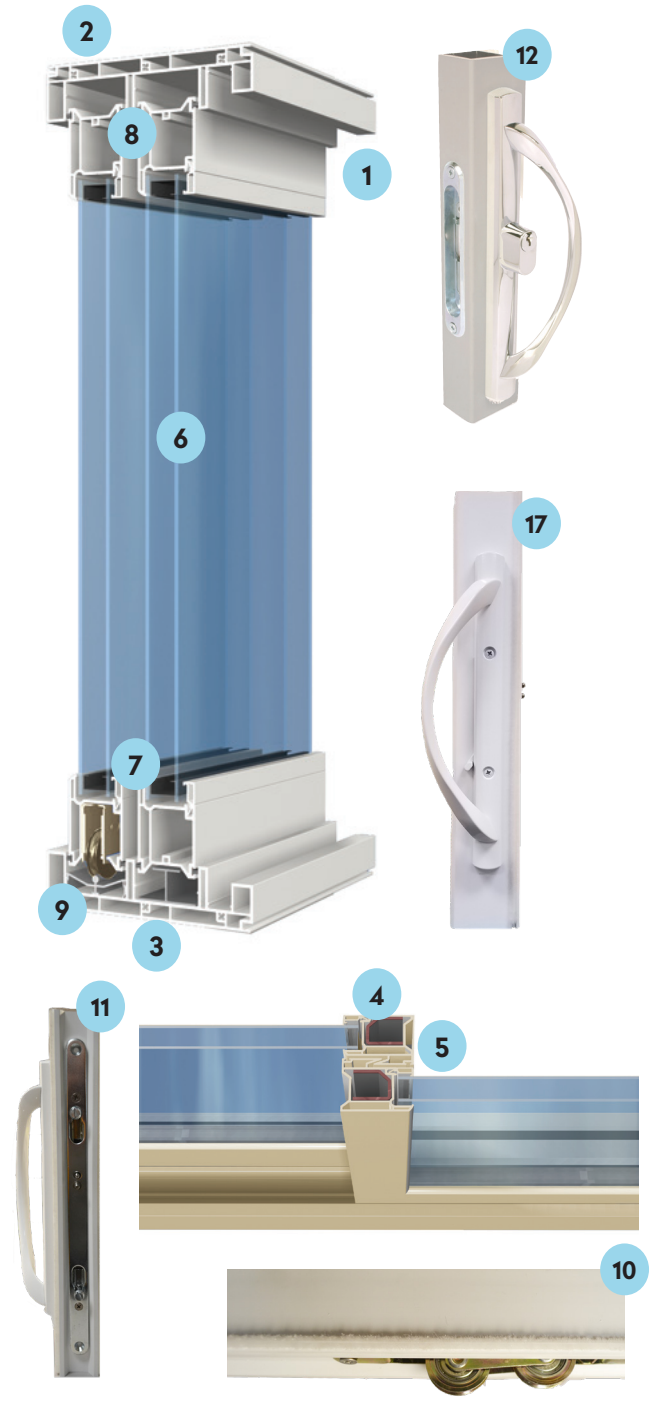


THE  
**HIGH POINTE**  
— PATIO DOOR —

# STANDARD FEATURES

1. **Fusion welded frame and panel corners** are secure, weathertight, draft-free and never pull apart.
2. **Multi-chambered PVC frame and panels** are energy efficient, maintenance-free and last a lifetime.
3. **6" Frame depth** provides sturdy structural integrity.
4. **Vertical panel rail reinforcement** is made of steel for warp-free construction.
5. **Full height interlock** ensures complete protection against air and water infiltration.
6. **3/4" dual paned insulated tempered glass** produces optimal energy performance.
7. **Intercept warm-edge spacer system** has proven seal integrity and conducts less heat and cold than other systems.
8. **Multiple rows of weatherstripping** create a weathertight seal around the panel edges.
9. **Unique monorail heavy-duty roller system** effortlessly handles the weight of even the heaviest panels.
10. **End-adjustable ball bearing tandem steel rollers** allow custom tuning for smooth, quiet operation.
11. **Dual point stainless steel mortise lock** ensures ultimate security by engaging in multiple areas.
12. **Sturdy keyed handle set** features an integral keyed lock for your convenience. Special protectants prevent the handles from scratching and corroding, even in harsh weather.
13. **Low-profile threshold and track cover** make ingress and egress easy and worry-free.
14. **Field reversible construction** allows versatility in determining operating direction (from outside looking in, left is standard).
15. **Heavy duty screen door** boasts beefy extruded aluminum frame, multiple nylon rollers and **UltraVue improved visibility mesh with watershed technology**.
16. **Limited Lifetime Warranty** includes coverage of all hardware, vinyl, glass and screen for as long as you reside in your home.
17. **Color matched interior handle** with optional designer finishes to add beauty to your door.

## THE HIGH POINTE PATIO DOOR



### STANDARD SIZES

| NOMINAL SIZE | DOOR SIZE         |
|--------------|-------------------|
| 5068         | 58-3/4" x 79-1/2" |
| 6068         | 70-3/4" x 79-1/2" |
| 8068         | 94-3/4" x 79-1/2" |

Custom sizes also available



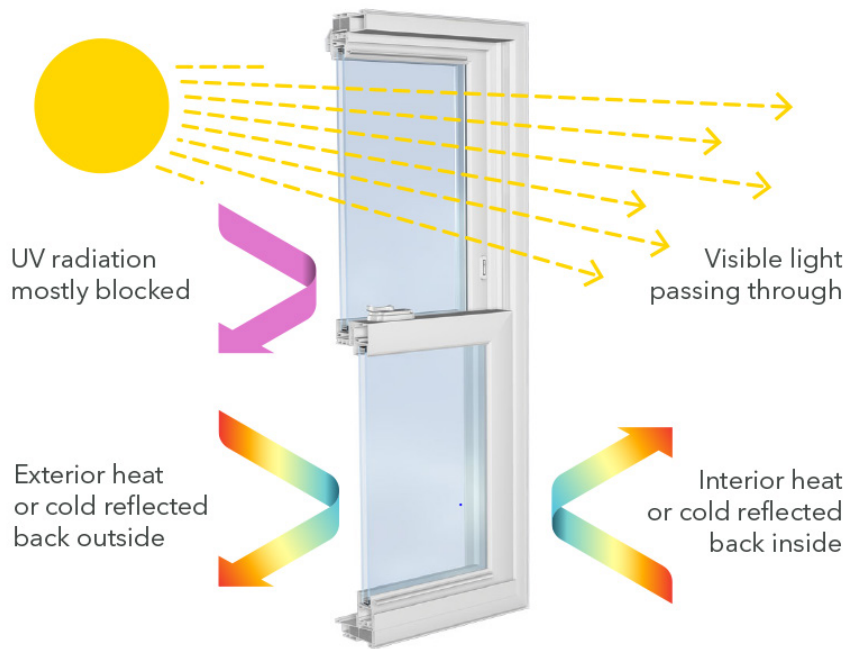
Superior construction and durability perfect for a lively home and a lovely view, High Pointe vinyl patio doors are designed with your active lifestyle in mind. With rugged features and a Lifetime Warranty, you can rest easy that your new door will operate smoothly and securely year after year.



## HOW DOES LOW-E GLASS WORK?

Low Emissivity (Low-E) glass is one of the cornerstones of any energy efficient door. Its primary purpose is managing radiation, whether it's solar, light, ultraviolet, or heat. The secret is two or three microscopic layers of silver, which reflect heat back to its source. Other layers in the Low-E coating filter ultraviolet and solar radiation, while allowing visible light through.

Glass packages are filled with either argon or krypton gas in between the panes of glass. Both gases are denser than air, so they make it more difficult for heat or cold to transmit through the glass units. We use high quality sealants, sophisticated filling equipment and a voluntary verification system to ensure consistent glass performance.



## GLASS OPTIONS

|   | GLASS PANES | LOW-E TYPE | AIRSPACE FILLING | U-VALUE | SHGC | VLT | DESIGN PRESSURE RATING |
|---|-------------|------------|------------------|---------|------|-----|------------------------|
| <b>IntelliGlass X</b><br><small>solar control</small>                         | 2           | Solar      | Argon            | .28     | .23  | .57 | R40                    |
| <b>IntelliGlass X<sup>3</sup></b><br><small>solar control triple pane</small> | 3           | Solar      | Argon            | .26     | .22  | .47 | R40                    |

# SCREENS

## BENEFITS OF ULTRAVUE SCREEN WITH WATER SHED TECHNOLOGY



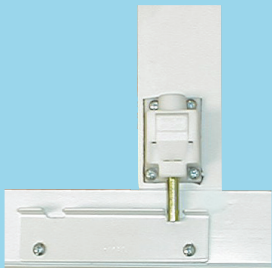
Water Shed Technology gives BetterVue a clear view for the life of the product by repelling water and resisting dirt and grime, making them much less likely to accumulate on the screen.

- Durable, hydrophobic coating will not wash off
- Sheds water and debris during rainstorm or with hose sprayer
- Preserves viewing clarity for more brilliant outward views
- Remains cleaner longer and increases life expectancy of the screening



## OPTIONAL FEATURES

### SECONDARY TOE LOCK



Optional secondary toe lock provides additional security when engaged. This lock can be installed as a secondary security lock to lock the door in fully closed position, or as a vent lock, to allow the door to be locked while partially open for fresh air flow.

### BLINDS BETWEEN THE GLASS



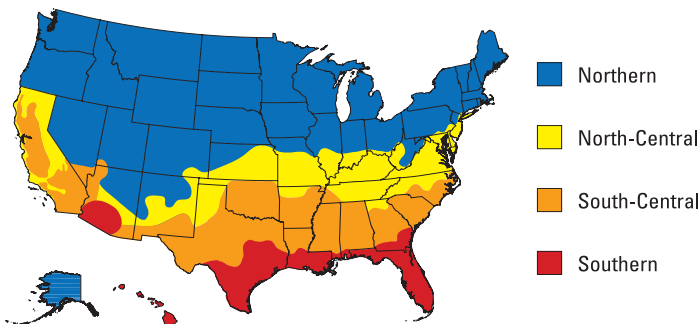
#### No more dusting or damaged blinds!

By choosing our optional blinds, you take control of privacy, security and daylight. Fingertip adjustment effortlessly operates tilt, raise and lower operations.

Sturdy aluminum blinds are sealed between two panes of Low E tempered glass. Blinds are covered by 10 year warranty against material and operational defects.

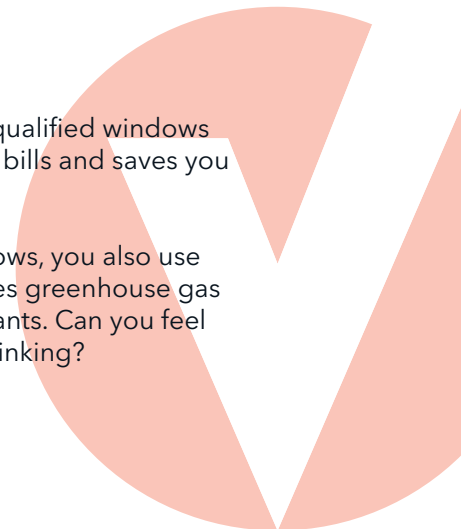


### ENERGY STAR® for Windows, Doors, and Skylights CLIMATE ZONE MAP



Installing ENERGY STAR qualified windows and doors lowers energy bills and saves you money.

With more efficient windows, you also use less energy, which reduces greenhouse gas emissions from power plants. Can you feel your carbon footprint shrinking?





# CHOOSE YOUR PERFECT LOOK

## COLORS

### Solid Colors



White



Tan

### Laminated Exteriors



Tan



Clay



Bronze

### Exterior Finishes



Butter

Tan

Clay

Pebble

Silver

Terra

Cocoa



Chestnut

Chocolate

Bronze

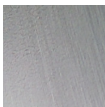
Black

Forest

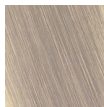
Brick

## HARDWARE FINISHES

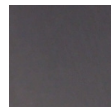
Hardware is color matched to door, or you can choose from one of our Designer Finishes:



Satin Nickel

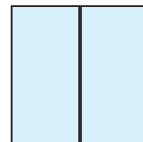


Antique Brass



Oil Rubbed Bronze

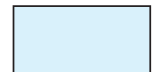
## STYLES



2 Panel Door



Fixed Panel



Transom

## GRIDS

### Patterns

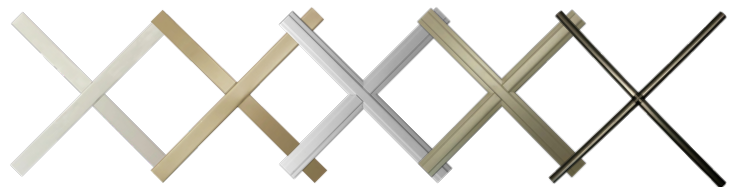


Colonial



Perimeter

### Profiles



Flat

Georgian

Pencil

## WHY VINYLMAX?



Quality First



Family Owned



Warranty



Made in USA



Our Process

**vinylmax**  
windows

2921 McBride Court  
Hamilton, OH 45011  
(800) 847-3736  
www.vinylmax.com

